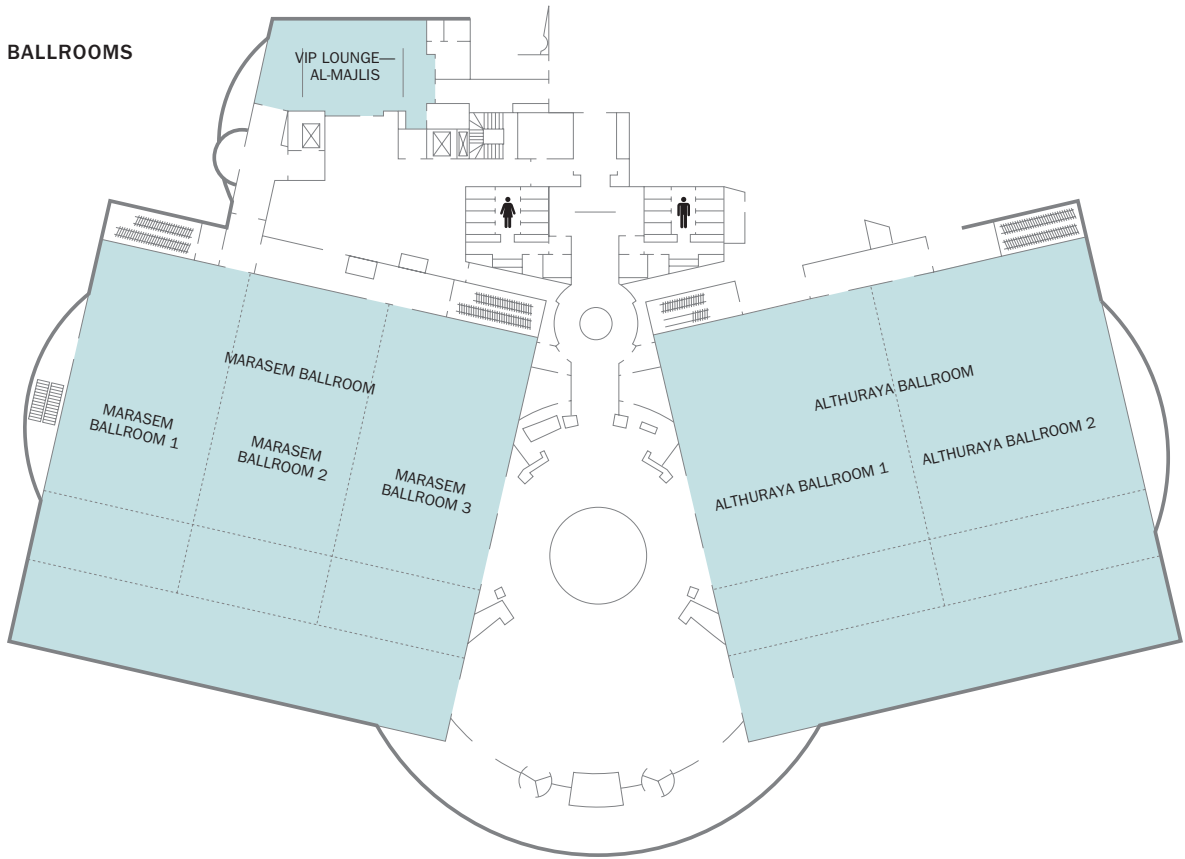


FLOOR PLAN



CAPACITY CHART

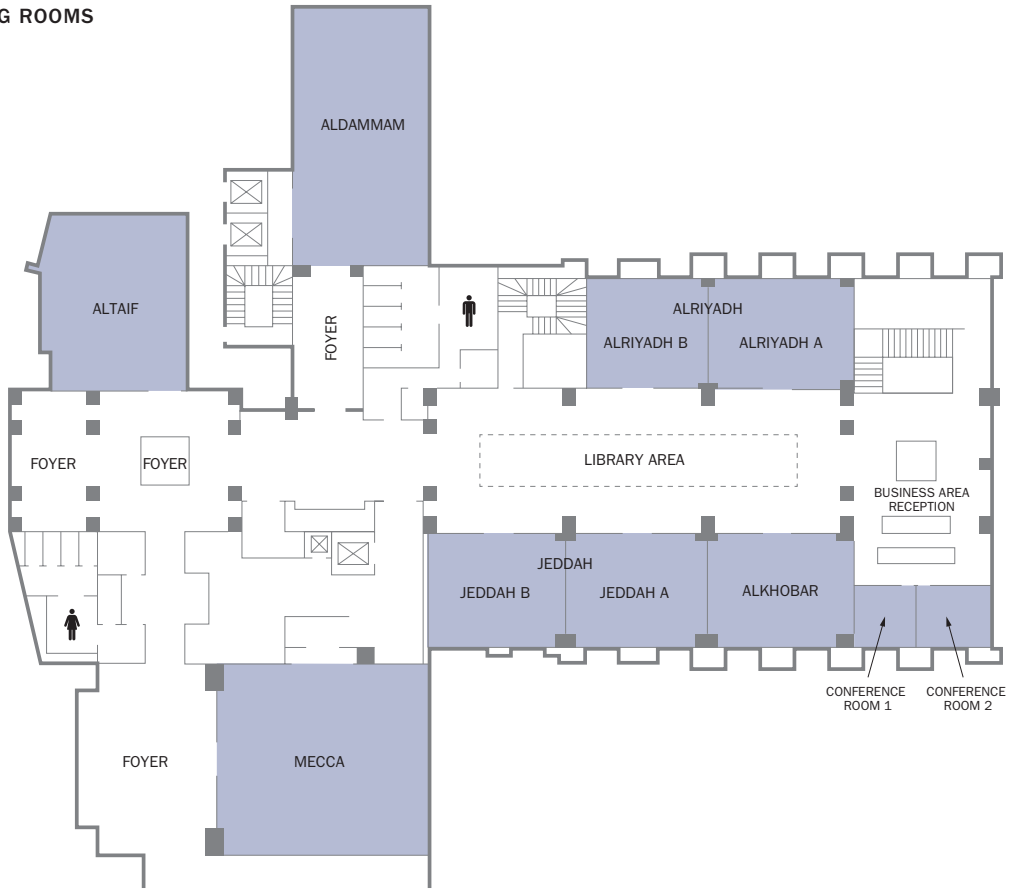
	OVERALL DIMENSIONS		SQUARE		HEIGHT		CAPACITIES					
	FEET	METRES	FEET	METRES	FEET	METRES	ROUNDS OF 10	RECEPTION	BOARDROOM	CLASSROOM	U-SHAPE	THEATRE
ALTHURAYA BALLROOM	118' 1" x 128'	36 x 39	15,113	1,404	31' 2"	9.5	700	1,500	–	660	125	1,500
ALTHURAYA BALLROOM 1	75' 6" x 62' 4"	23 x 19	4,704	437	31' 2"	9.5	265	400	70	220	60	400
ALTHURAYA BALLROOM 2	75' 6" x 62' 4"	23 x 19	4,704	437	31' 2"	9.5	265	400	70	220	60	400
MARASEM BALLROOM	118' 1" x 128'	36 x 39	15,113	1,404	31' 2"	9.5	700	1,500	–	660	125	1,500
MARASEM BALLROOM 1	75' 6" x 42' 8"	23 x 13	3,218	299	31' 2"	9.5	180	260	50	150	38	270
MARASEM BALLROOM 2	75' 6" x 42' 8"	23 x 13	3,218	299	31' 2"	9.5	180	260	50	150	38	270
MARASEM BALLROOM 3	75' 6" x 42' 8"	23 x 13	3,218	299	31' 2"	9.5	180	260	50	150	38	270
VIP LOUNGE—AL-MAJLIS	44' 3" x 30' 10"	13.5 x 9.4	1,367	127	–	–	–	–	–	–	–	–

Fairmont Riyadh
P.O. Box 47400
Airport Road, Cordoba Area
Business Gate, Riyadh
Saudi Arabia 11552
T +966 11 455 5678
F +966 11 455 1293
riy.riyadh@fairmont.com
fairmont.com/riyadh

Fairmont
RIYADH

FLOOR PLAN

MEETING ROOMS



CAPACITY CHART

	OVERALL DIMENSIONS		SQUARE		HEIGHT		CAPACITIES					
	FEET	METRES	FEET	METRES	FEET	METRES	ROUNDS OF 10	RECEPTION	BOARDROOM	CLASSROOM	U-SHAPE	THEATRE
ALDAMMAM	55' 9" x 24' 11"	17 x 7.6	1,391	129.2	11' 6"	3.5	80	90	40	80	24	110
ALKHOBAR	26' 11" x 22' 4"	8.2 x 6.8	601	55.8	11' 6"	3.5	-	-	12	-	-	-
ALRIYADH	53' 2" x 43' 4"	16.2 x 13.2	1,151	106.9	11' 6"	3.5	60	70	32	60	20	90
ALRIYADH A	27' 7" x 21' 8"	8.4 x 6.6	596	55.4	11' 6"	3.5	30	40	16	35	10	50
ALRIYADH B	25' 7" x 21' 8"	7.8 x 6.6	554	51.5	11' 6"	3.5	30	35	15	30	10	40
ALTAIF	32' 6" x 25' 3"	9.9 x 7.7	820	76.2	11' 6"	3.5	45	50	23	45	16	65
CONFERENCE ROOM 1	12' 2" x 12' 6"	3.7 x 3.8	152	14.1	11' 6"	3.5	-	-	-	-	-	-
CONFERENCE ROOM 2	12' 2" x 12' 2"	3.7 x 3.7	147	13.7	11' 6"	3.5	-	-	8	-	-	-
JEDDAH	54' 6" x 44' 7"	16.6 x 13.6	1,215	112.9	11' 6"	3.5	65	75	34	65	20	95
JEDDAH A	27' 11" x 22' 4"	8.5 x 6.8	622	57.8	11' 6"	3.5	34	40	18	34	12	50
JEDDAH B	26' 7" x 22' 4"	8.1 x 6.8	593	55.1	11' 6"	3.5	32	36	16	32	10	46
MECCA	40' 4" x 35' 9"	12.3 x 10.9	1,443	134.1	11' 6"	3.5	80	100	40	80	26	112